

Geocentrix  
**ReWaRD 2.8**

Quick-Start Guide

*Embedded retaining wall design*

## Notices

Information in this document is subject to change without notice and does not represent a commitment on the part of Geocentrix Ltd. The software described in this document is furnished under a licence agreement or non-disclosure agreement and may be used or copied only in accordance with the terms of that agreement. It is against the law to copy the software except as specifically allowed in the licence or non-disclosure agreement. No part of this manual may be reproduced or transmitted in any form or by any means, electronic or mechanical, including photocopying and recording, for any purpose, without the express written permission of Geocentrix Ltd.

©1992-2021 Geocentrix Ltd. All rights reserved.

“Geocentrix” and “ReWaRD” are registered trademarks of Geocentrix Ltd. Other brand or product names are trademarks or registered trademarks of their respective holders.

Set in Optimum using Corel® WordPerfect® X7. Printed in the UK.

## Acknowledgments

ReWaRD was originally commissioned by British Steel Ltd.

ReWaRD 2.x was designed and written by Dr Andrew Bond of Geocentrix, with the assistance of Ian Spencer of Honor Oak Systems.

The *ReWaRD Quick-Start Guide* was written by Andrew Bond.

Parts of ReWaRD were developed with the assistance of Professor David Potts of Imperial College of Science, Technology, and Medicine, London, and Dr Hugh St John of the Geotechnical Consulting Group, London. The following people assisted with the testing of this and previous versions of the program: Romain Arnould, Andy Fenlon, Joe Emmerson, Kieran Dineen, and Jenny Bond.

## Revision history

Last revised 3<sup>rd</sup> June 2021 (for version 2.8.4).

## TABLE OF CONTENTS

<b>TABLE OF CONTENTS. . . . .</b>	<b>3</b>
<b>INTRODUCING ReWARD. . . . .</b>	<b>5</b>
What's in ReWaRD 2?	5
What's new in ReWaRD 2.8?	5
What's new in ReWaRD 2.7?	6
Documentation	6
Quick-start guide (this booklet)	6
User manual	6
Reference manual	7
Help system	7
Software Re-Assurance™	7
Notes	7
<b>TUTORIAL 1</b>	
<b>CANTILEVER WALL IN SAND. . . . .</b>	<b>9</b>
Overview	9
Step 1 - create the project	10
Step 2 - choose the design standard	12
Step 3 - calculate structural forces	13
Step 4 - review earth pressures	15
Step 5 - check the required embedment	16
Step 6 - close the project	17
What next?	18
<b>TUTORIAL 2</b>	
<b>PROPPED WALL IN STIFF CLAY. . . . .</b>	<b>19</b>
Overview	19
Step 1 - create the construction stage	20
Step 2 - create the ground conditions	21
Step 3 - create the wall and prop	24
Step 4 - create the borehole	27
Step 5 - create water tables	29
Step 6 - choose the design standard	31
Step 7 - calculate the required embedment	32
Step 8 - calculate structural forces	32
Step 9 - print the results	33
Step 10 - close the project	35
What next?	35

**TUTORIAL 3**

<b>COFFERDAM IN MIXED SOILS. ....</b>	<b>36</b>
Overview	37
Step 1 - create the project	37
Step 2 - change the excavation depths	40
Step 3 - add the missing soils	41
Step 4 - add missing layers	43
Step 5 - extend the wall and move the top prop	44
Step 6 - move existing water tables and create new ones	46
Step 7 - add a surcharge	49
Step 8 - select the design standard	49
Step 9 - calculate earth pressures, structural forces, etc.	50
What next?	53

## INTRODUCING ReWARD

ReWaRD® 2.8 provides a rich set of capabilities for engineers to design/analyse:

- various types of embedded retaining walls, including sheet pile, diaphragm, secant and contiguous bored pile sections
- cantilever, single-propped, double-propped, and multi-propped walls
- in the common soil types, such as gravel, sand, silt, and clay
- using various current design standards (such as Eurocode 7 and BS 8002:2015) and historical standards (such as CIRIA 104)

ReWaRD employs the limiting equilibrium method to analyse cantilever and single-propped retaining walls; and the ‘hinge method’ to analyse double-propped and multi-propped walls. Both traditional lumped factors-of-safety and modern partial factors can be applied in these calculations.

ReWaRD estimates wall movements by reference to a database of measured wall displacements and ground settlement.

### What’s in ReWaRD 2?

- Drawing Board provides elevation view of your project
- ‘Live’ editing of any object in the project
- Stockyard allows quick access to individual components of the project
- Program contains over 100 predefined items for use in your project
- Construction Wizard guides you through setting up sequenced construction stages
- Workbook provides a spreadsheet-like display of all results
- Workbook gives a graphical views of key results
- Message View records program activities and displays warning and error messages as appropriate
- Comprehensive Reference Manual.

### What’s new in ReWaRD 2.8?

- Improved implementation of Eurocode 7 Design Approach 1
- Addition of Eurocode 7 Design Approaches 2 and 3
- Implementation of BS 8002:2015

- Full compatibility with Windows 10
- Improved controls for entering depth/level
- Re-designed menu structure, made consistent with other Geocentrix programs
- Improved support for wide area network licences
- Improved interface for entering angles
- Licence can now be imported directly from LIC files
- Several minor improvements to all parts of the program
- Updated User Manual and new Quick-start Guide

## What's new in ReWaRD 2.7?

- Implementation of Eurocode 7 (EN 1997-1) design rules for Design Approaches 1, 2, and 3
- Option to apply partial factors to actions or effects of actions
- Updated user interface, with better organization of menu options
- Support for running the program on Windows 7
- Updated User Manual and new Quick-start Guide.

## Documentation

ReWaRD 2.8 is supplied with a detailed *Quick-start Guide*, comprehensive *User Manual*, and authoritative *Reference Manual*. The latest versions of these manuals (including any corrections and/or additions since the program's first release) are available in electronic (Adobe® Acrobat®) format from the Geocentrix website. ([www.geocentrix.co.uk/ReWaRD](http://www.geocentrix.co.uk/ReWaRD) and follow links to ReWaRD's documentation).

### Quick-start guide (this booklet)

The *ReWaRD Quick-start Guide* includes three tutorials that show you how to use the main features of ReWaRD. Each tutorial provides step-by-step instructions on how to drive the program. The tutorials increase in difficulty and are designed to be followed in order.

### User manual

The *ReWaRD User Manual* explains how to use ReWaRD. It provides a detailed description of the program's user interface.

## Reference manual

The *ReWaRD Reference Manual* gives detailed information about the engineering theory that underpins ReWaRD's calculations. The manual assumes you have a working knowledge of the geotechnical design of embedded retaining walls, but provides appropriate references for further study if you do not.

## Help system

ReWaRD's help system contains detailed information about the program, including most of the information contained in the ReWaRD Quick-Start Guide, User Manual, and Reference Manual – plus additional information regarding ReWaRD that is not found in any of these documents.

Help appears in a separate window to ReWaRD, allowing you to view the help topics while you continue to work with ReWaRD itself. To open the help system:

- Press F1
- Click the Help button in any dialog box
- Click on the Help command on ReWaRD's main menu and select 'Contents'

## Software Re-Assurance™

Software Re-Assurance (which includes maintenance updates, version upgrades, and technical support) for ReWaRD is available direct from Geocentrix or through your local distributor. To obtain Re-Assurance, please contact Geocentrix as follows:

ReWaRD Technical Support Geocentrix Ltd Scenic House, 54 Wilmot Way Banstead, Surrey SM7 2PY, United Kingdom  Please quote your licence number on all correspondence	Voice: +44 (0)1737 373963 E-mail: <a href="mailto:support@geocentrix.co.uk">support@geocentrix.co.uk</a> Web: <a href="http://www.geocentrix.co.uk/support">www.geocentrix.co.uk/support</a>  Please be at your computer and have your licence number ready when you call
--	---

Maintenance updates are available free-of-charge from the Geocentrix website.

## Notes

The screenshots in this guide were produced on Windows 10. Your screen may

differ, depending on the version of Windows on which you run ReWaRD. Not all options are available in every edition of ReWaRD.

In this guide, '[Projects]' refers to the folder where your ReWaRD projects are saved, typically:

on Windows XP:

```
C:\Documents and Settings\All Users\SharedDocuments\  
Geocentrix\ReWaRD\2.8
```

on Windows 7 and later:

```
C:\Users\Public\Documents\Geocentrix\ReWaRD\2.8
```



# TUTORIAL 1

## CANTILEVER WALL IN SAND

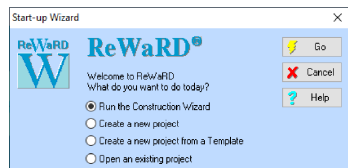
This tutorial demonstrates the basic features of ReWaRD, through a worked example involving the analysis of a cantilever wall in sand:

- Ground conditions comprise 15 m of dense sand. The sand has unit weight of  $17 \text{ kN/m}^3$  and angle of shearing resistance of  $35^\circ$ .
- The groundwater table is 15 m below formation level and hence the sand can be considered dry throughout.
- The retaining wall, which is made from a 0.6 m thick diaphragm panel, will support a 4 m deep excavation without the aid of propping.
- You want to determine the wall's minimum depth of embedment and the maximum bending moment and shear force it must resist.

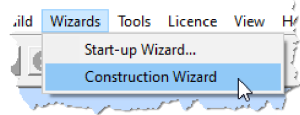
### Overview

- In Step 1, you will use the Construction Wizard to create the scenario described above, including the wall, a borehole, excavation, and ground surface.
- In Step 2, you will select the design standard to use when calculating the wall's stability.
- In Step 3, you will calculate the resultant structural forces ('effects of actions' in Eurocode terms) acting in the retaining wall
- In Step 4, you will review the earth pressures that were used to calculate the resultant structural forces acting in the retaining wall.
- In Step 5, you will determine the depth of embedment required to satisfy the requirements of Eurocode 7 with regards to overall stability of the wall.
- In Step 6, you will close (and optionally save) the project.

If ReWaRD is not already running, double-click on the ReWaRD icon on Windows' Desktop to start the program. Once the splash screen has disappeared, ReWaRD displays its Start-up Wizard. Select **Run the Construction Wizard** from the available options and click **Go** to proceed.



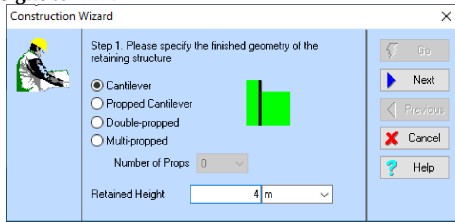
If ReWaRD is already running and you have an existing project open, click **Close** on the program's **File menu**. (You will be prompted to save your work if you have not already done so.) Then, open the Construction Wizard by selecting **Wizards** on ReWaRD's main menu and then click on the **Construction Wizard** command.



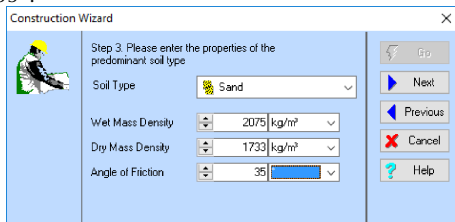
## Step 1 – create the project

In Step 1, you will use the Construction Wizard to create a scenario including the wall, a borehole, excavation, and ground surface.

- 1 The first page of the Wizard ('Step 1') asks you to specify the finished geometry of the retaining structure. Select the **Cantilever** button and set the **Retained Height** to 4 m.

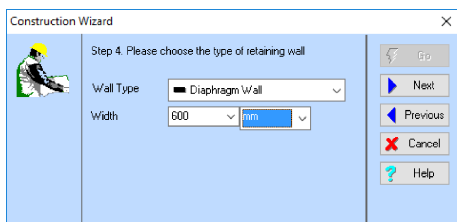


- 2 Click **Next** to continue.
- 3 Step 2 of the Wizard asks you to enter the depths of any props. Since there are none in this example, click **Next** to continue.
- 4 Step 3 of the Wizard asks you to enter the properties of the predominant soil type. Select 'Sand' from the **Soil Type** box; leave the **Wet Mass Density** at its default value; enter a **Dry Mass Density** of 1733 kg/m<sup>3</sup> (equivalent to a weight density of 17 kN/m<sup>3</sup>); and finally enter an **Angle of Friction** of 35°.

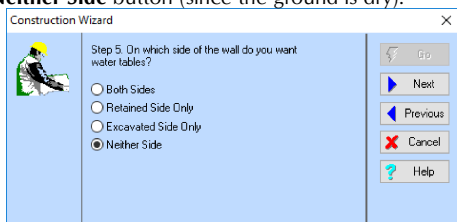


- 5 Click **Next** to continue.

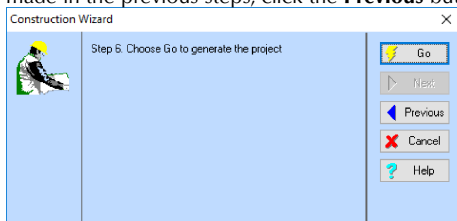
- 6 Step 4 of the Wizard asks you to choose the type of retaining wall to create. Select 'Diaphragm Wall' in the **Wall Type** box and enter 600 mm in the **Width** box.



- 7 Click **Next** to continue.
- 8 Step 5 of the Wizard asks you where you want to place any water tables. Select the **Neither Side** button (since the ground is dry).



- 9 Click **Next** to continue.
- 10 Step 6 of the Wizard asks you to generate the project. If you want to change any settings made in the previous steps, click the **Previous** button to go back.



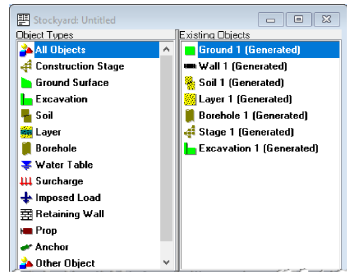
- 11 Click **Go** to generate the project.

The Construction Wizard then:

- Creates Ground 1, Wall 1, Soil 1, Layer 1, Borehole 1, Stage 1, and Excavation 1

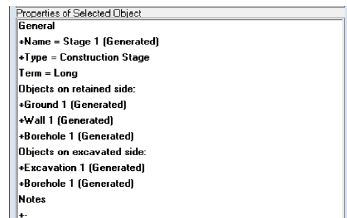
- Attaches Soil 1 to Layer 1
- Adds Layer 1 to Borehole 1
- Adds Ground 1, Wall 1, Borehole 1 (on both the retained side and the excavated side of the wall), and Excavation 1 to Stage 1
- Opens the Workbook to display the contents of Stage 1

You can view these objects by selecting the 'All Objects' option in the Stockyard's **Object Types** panel (top-left of the Stockyard). The Stockyard will look as shown in the picture alongside.



To view the properties of any particular object:

1. Select the object you want in the Stockyard's **Existing Objects** panel (top-right of the Stockyard). For example, select 'Soil 1 (Generated)'
2. A summary of the selected object's properties will appear in the Stockyard's **Properties of Selected Object** panel (at the bottom of the Stockyard)



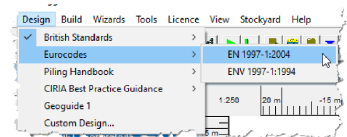
Now is a good moment to save your work to disk, which you can do using the **Save** or **Save As** commands on ReWaRD's **File** menu.

A copy of this step can be found at [Projects]\Tutorial 1\Step 1.rwd.

## Step 2 – choose the design standard

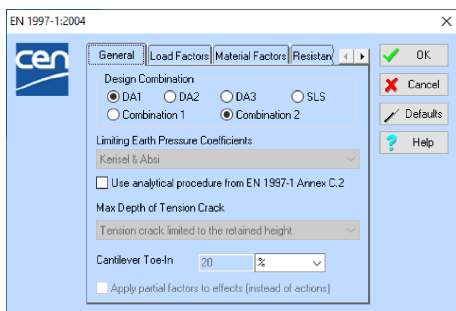
In Step 2, you will select the design standard to use when calculating the wall's stability.

1. If it is not already ticked, select **Eurocodes > EN 1997-1:2004** from ReWaRD's **Design** menu.
2. Next, review the settings for this standard by selecting **Design Standard...** from the **Properties**



menu.

- On the **General** tab, select the options DA1 and Combination 2 (if not already selected).



- Click on the **Load Factors** tab to confirm that a partial factor of 1.0 is applied to permanent and accidental actions and 1.3 to variable actions (as per the requirements of EN 1997-1).
- Click on the **Material Factors** tab to confirm that the factors applied to  $\tan \phi$  and  $c'$  are 1.25 and to  $c_u$  is 1.4 (again, as per EN 1997-1).
- Review other settings by clicking on the various tabs in turn.
- Click **OK** to close the property box.

Partial Factors on Actions		
	Unfavourable	Favourable
Permanent	1	1
Variable	1.3	
Accidental	1	

Partial Factors on Drained Parameters	
Shearing Resistance ( $\tan \phi$ )	1.25
Effective Cohesion ( $c'$ )	1.25

Partial Factors on Undrained Parameters	
Undrained Strength ( $c_u$ )	1.4

A copy of this step can be found at [Projects]\Tutorial 1\Step 2.rwd.

### Step 3 – calculate structural forces

In Step 3, you will calculate the resultant structural forces ('effects of actions' in Eurocode terms) acting in the retaining wall.

- If it is not already selected, click on the Workbook to make it active. (The commands on the **Build** menu are only enabled when a Workbook is selected.)
- Open the **Build** menu and choose the **Structural Forces** command. Alternatively, click on the **Calculate structural Forces** button on the Workbook's toolbar (a tooltip will pop up when you hover the mouse



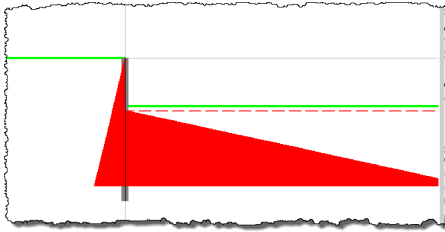
## Step 4 – review earth pressures

In Step 4, you will review the earth pressures that were used to calculate the resultant structural forces acting in the retaining wall.

1. To display the earth pressures that were used to calculate structural forces, open the **Workbook** menu and choose the **Earth Pressures > At Minimum Safe Embedment** command. To display the results in graphical form, re-open the **Workbook** menu and choose the **Picture** command.



2. The drawing shows active and passive earth pressures on either side of the wall; and indicates (with a red dashed line) the extent of the unplanned excavation that has automatically been taken into account. The depth of the earth pressures corresponds to the minimum safe embedment of the wall. These earth pressures are in equilibrium, with partial factors from the specified design standard applied.
3. You can display earth pressures over the full extent of the wall, as follows. Open the **Build** menu and choose the **Earth Pressures > As Built** command. (ReWaRD will automatically display the results of this calculation when it has finished. Earth pressures for the 'as built' condition have partial factors applied in their calculation, but are not normally in equilibrium, unless the wall's embedded length happens to match that required by those factors. See the *ReWaRD Reference Manual* for an explanation of the different types of earth pressure that the program calculates.



- You can display earth pressures at the point at which the wall would fail (i.e. with no safety margin built in), as follows. Open the **Build** menu and choose the **Earth Pressures > At Failure** command. Earth pressures for the 'at failure' condition are in equilibrium but have no partial factors applied in their calculation.

- You can view numerical values of any of these earth pressures by selecting **Table** on the **Workbook** menu. In its default appearance, the Table View displays design values of earth, water, and total pressures on both sides of the wall.

	A	B	C	D	E	F	G
1	Depth	EarthPt	WaterPt	TotalPt	EarthPt	WaterPt	TotalPt
2	m	kPa	kPa	kPa	kPa	kPa	kPa
3		Retained	Retained	Retained	Excavated	Excavated	Excavated
4	0.00	0.0	0.0	0.0	0.0	0.0	0.0
5	4.40	15.9	0.0	15.9	0.0	0.0	0.0
6	4.40	15.9	0.0	15.9	0.0	0.0	0.0
7	6.21	22.5	0.0	22.5	264.5	0.0	264.5
8							

- You can view the earth pressure coefficients used in the calculations, by selecting **Earth Pressures > Coefficients** on the **Workbook** menu. In this appearance, the Table View displays design values of  $K$  and  $K_c$  on both sides of the wall (i.e.  $K_a$  and  $K_{ac}$  on the retained side and  $K_p$  and  $K_{pc}$  on the excavated side).

	A	B	C	D	E
1	Depth	K	Kc	K	Kc
2	m				
3		Retained	Retained	Excavated	Excavated
4	0.00	0.213	0.923	0.000	0.000
5	4.40	0.213	0.923	0.000	0.000
6	4.40	0.213	0.923	8.601	-5.866
7	4.51	0.213	0.923	8.601	-5.866
8	4.51	0.213	0.923	8.601	-5.866
9	6.21	0.213	0.923	8.601	-5.866
10					
11					

- Finally, you can view all the values used to calculate earth pressures, by selecting **Earth Pressures > All** on the **Workbook** menu. In this appearance, the Table View displays the results of every step in the calculations (see the *ReWaRD Reference Manual* for details).

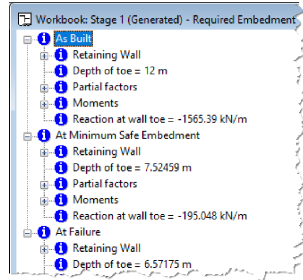
A copy of this step can be found at [Projects]\Tutorial 1\Step 4.rwd.

## Step 5 – check the required embedment

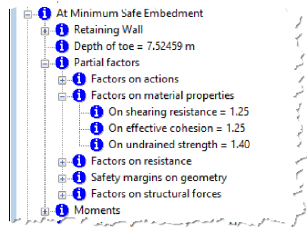
In Step 5, you will determine the depth of embedment required to satisfy the requirements of Eurocode 7 with regards to overall stability of the wall.



1. Open the **Build** menu and choose the **Required Embedment** command. (ReWaRD automatically switches the Workbook to its Summary View.)
2. The Workbook displays its results in a tree-like structure, similar to that used in Windows Explorer. You can expand any particular node by clicking on the + button next to its caption; and you can collapse a node by clicking on the - button.



3. The required embedment of the wall is displayed under the **At Minimum Safe Embedment** branch of this tree structure.
4. To see the partial factors that were applied in the **At Minimum Safe Embedment** calculation, expand the **Partial Factors** branch by clicking on its + button. Then click on the + button next to **Factors on material properties**. The Workbook will display the values of the partial factors that were applied to shearing resistance (1.25), effective cohesion (1.25), and undrained strength (1.40).



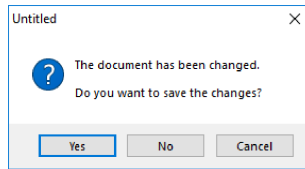
A copy of this step can be found at [Projects]\Tutorial 1\Step 5.rwd.

## Step 6 – close the project

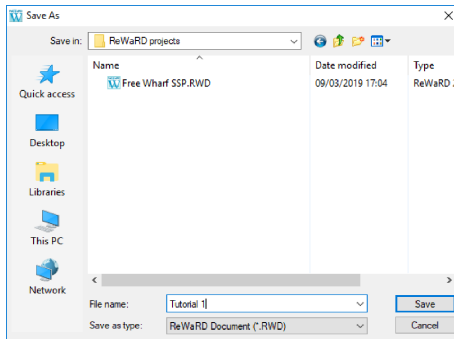
In Step 6, you will close and (optionally) save<sup>1</sup> the project.

1. Open the program's **File** menu and click **Exit**.
2. If you have made changes to the project since it was last saved, ReWaRD will ask you if you want to save it before proceeding. Answer **Yes** or **No** by clicking the appropriate button.

<sup>1</sup>You cannot save the project in the Trial Edition of ReWaRD



3. If you have not already named this file, ReWaRD will display its **Save As** box. Enter the name you want in the **File name** box and click the **Save** button. ReWaRD will then save and close the project.



A copy of this project can be found at [Projects]\Tutorial 1\Tutorial 1.rwd.

## What next?

Tutorial 2 shows you how to build a project from scratch using ReWaRD's drag-and-drop design features; and demonstrates how to produce a printed report.

## TUTORIAL 2

### PROPPED WALL IN STIFF CLAY

Tutorial 2 helps you to extend your knowledge of ReWaRD, by designing a propped wall in stiff clay. The tutorial shows you how to build a project from scratch, without using the Construction Wizard; drag engineering objects from the Stockyard and drop them onto a Workbook's Drawing Board; and obtain a printout of your input and output data.

The worked example is taken from CIRIA Report 104, *Design of retaining walls embedded in stiff clays* (by Padfield and Mair, 1984). Appendix C of that report includes calculations for propped walls in stiff clay with and without seepage around the wall. Example C.2 involves design of a wall supporting an excavation in stiff clay.

- Ground conditions at the site comprise an unspecified thickness of stiff clay ( $\gamma_{\text{dry}} = \gamma_{\text{sat}} = 20 \text{ kN/m}^3$ ;  $\phi = 25^\circ$ ;  $c' = 0 \text{ kPa}$ ).
- Groundwater is at 1 m below ground level on the retained side of the wall and at 1 m below formation level on the excavated side.
- The wall (type unspecified, but assumed herein to be secant piled) will form part of the temporary works and will retain 8 m of soil.
- The wall is supported by a prop at 2 m below ground level.
- You want to calculate the wall's minimum depth of embedment; the maximum bending moment and shear force in the wall; and the force in the prop.

### Overview

- In Step 1, you will create a construction stage and display its Workbook showing a blank Drawing Board.
- In Step 2, you will define the geometry of the ground on both sides of the wall.
- In Step 3, you will create a retaining wall of the appropriate type, specify its length and cross-sectional properties, and then create a prop to support the wall.
- In Step 4, you will specify ground conditions at the site – using a soil to represent the properties of the clay, a layer to represent the geometry and drainage conditions of that soil, and a borehole to represent the elevation and ordering of the layers.

- In Step 5, you will create two water tables, one on each side of the wall.
- In Step 6, you will select the design standard to use when calculating the wall's stability.
- In Step 7, you will determine the required embedment for this design situation, according to CIRIA 104's Gross Pressure Method.
- In Step 8, you will determine the resulting structural forces in the wall according to CIRIA 104.
- In Step 9, you will obtain a hard copy of your results.
- In Step 10, you will close (and optionally save) the project.

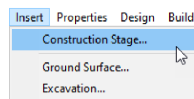
If ReWaRD is not already running, double-click on the ReWaRD icon on Windows' Desktop to start the program. Once the splash screen has disappeared, ReWaRD displays its Start-up Wizard. Select **Create new project** from the available options and click **Go** to proceed.

If ReWaRD is already running and you have an existing project open, click **New** on the program's **File menu**. (You will be prompted to save your work if you have not already done so.)

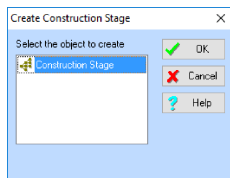
## Step 1 – create the construction stage

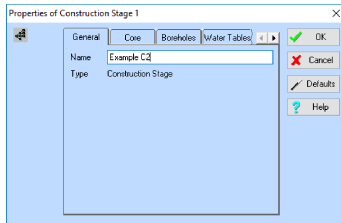
In Step 1, you will create a construction stage and display its Workbook showing a blank Drawing Board.

1. Open the program's **Insert** menu and click on **Construction Stage...** to display the Create Construction Stage box. Alternatively, click on the **Create Construction Stage** button on the Stockyard's Toolbar.

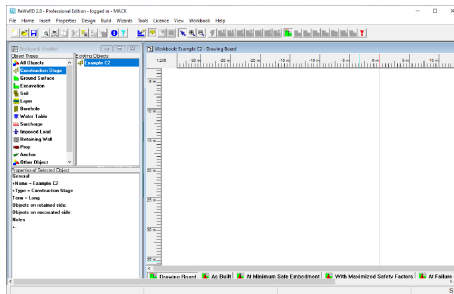


2. The Create Construction Stage box will open. Since there is only one option to choose from, click the **OK** button to proceed.
3. The 'Properties of Construction Stage 1' box will open. This is a multi-paged dialog box that allows you to set the properties of the newly-created construction stage. Change the **Name** of the construction stage to 'Example C2' and click **OK** to proceed. (The stage's other properties will be set later.)





4. ReWaRD will create a new construction stage with the name 'Example C2', add it to the Stockyard, and then open a Workbook showing the contents of that stage (which is currently empty). Your screen should now look something like this:



A copy of this step can be found at [Projects]\Tutorial 2\Step 1.rwd.

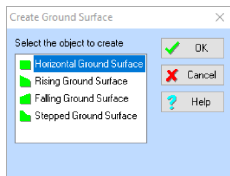
## Step 2 – create the ground conditions

In Step 2, you will define the geometry of the ground on both sides of the wall.

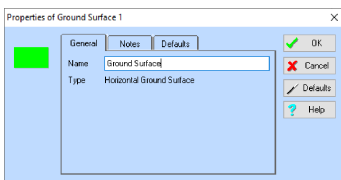
1. Click on the **Stockyard** to make sure it is selected (the commands on the **Insert** menu are only enabled when the Stockyard is selected).
2. Open the program's **Insert** menu and click on **Ground Surface...** to display the Create Ground Surface box. Alternatively, click on the **Create Ground Surface** button on the Stockyard's Toolbar.



3. The Create Ground Surface box will open. Select 'Horizontal Ground' and click **OK** to proceed.

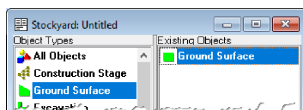


- The 'Properties of Ground Surface 1' box will open and display its **General** page. Change the **Name** of the ground surface to 'Ground Surface' and click **OK** to proceed.

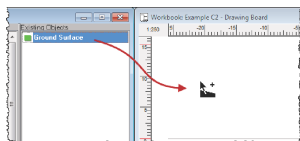


- ReWaRD will create a new ground surface named 'Ground Surface' and add it to the Stockyard. To add this ground surface to the construction stage, you drag it from the Stockyard onto the Workbook's Drawing Board. To do so...

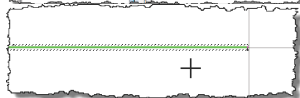
- First, with the cursor located over the 'Ground Surface' item in the Stockyard, click – and hold down – the left mouse button to select that item.



- Second, without releasing the mouse button, move (drag) the cursor over the Workbook (anywhere where do). The cursor will change to indicate where you can drop this item.

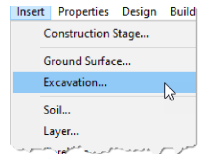
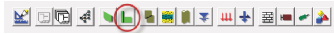


- Finally, release the left mouse button to drop the ground surface into the construction stage. The ground surface will immediately appear on the drawing, to the left of the vertical datum line.

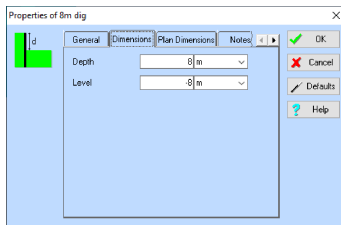
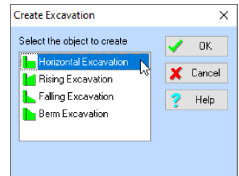


- Now repeat the above steps for an excavation. Click on the **Stockyard** to make sure it is selected (the commands on the **Insert** menu are only enabled when the Stockyard is selected).

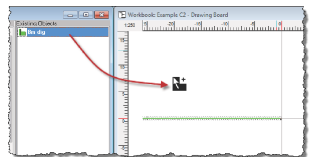
- Open the program's **Insert** menu and click on **Excavation...** to display the Create Excavation box. Alternatively, click on the **Create Excavation** button on the Stockyard's Toolbar.



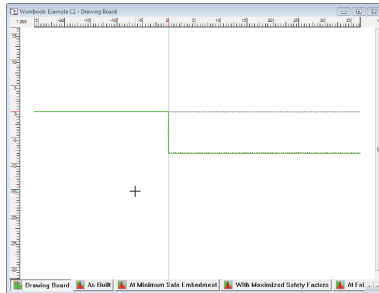
- The Create Excavation box will open. Select 'Horizontal Excavation' and click **OK** to proceed.
- The 'Properties of Excavation 1' box will open. Change the **Name** of the excavation to '8 m dig'.
- Click on the **Dimensions** tab to change page. Change the **Depth** of the excavation to 8 m and click **OK** to proceed. (The Plan Dimensions of this object will take on default values.)



- ReWaRD will create a new excavation named '8 m dig' and add it to the Stockyard. To add the excavation to the construction stage, drag it from the Stockyard and drop it onto the Workbook's Drawing Board as explained above.



- When you release the left mouse button to drop the excavation into the construction stage, it will immediately appear on the drawing, to the right of the vertical datum line. The Drawing Board should now look like this:



A copy of this step can be found at [Projects]\Tutorial 2\Step 2.rwd.

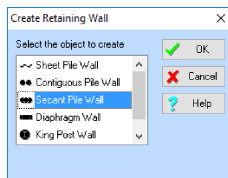
### Step 3 – create the wall and prop

In Step 3, you will create a retaining wall of the appropriate type, specify its length and cross-sectional properties, and then create a prop to support the wall.

1. Click on the **Stockyard** to make sure it is selected (the commands on the **Insert** menu are only enabled when the Stockyard is selected).
2. Open the program's **Insert** menu and click on **Retaining Wall...** to display the Create Retaining Wall box. Alternatively, click on the **Create Retaining Wall** button on the Stockyard's Toolbar.

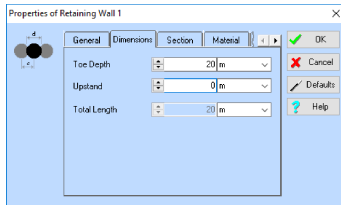


3. The Create Retaining Wall box will open. Select 'Secant Pile Wall' and click **OK** to proceed.

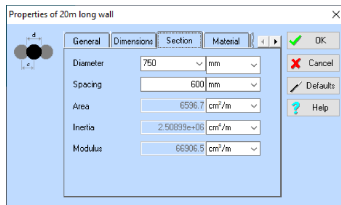
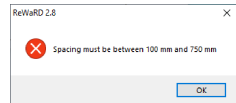


4. The 'Properties of Retaining Wall 1' box will open. Change the **Name** of the wall to '20 m long wall'.
5. Click on the **Dimensions** tab to change page. Change the **Toe Depth** of the wall to 20 m.





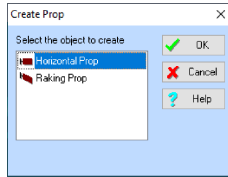
- Click on the **Section** tab to change page. Change the **Diameter** of the piles to 750 mm and click **OK** to proceed. An error message will appear telling you that the 'Spacing must be between 100 mm and 750 mm'. (Since this is a secant piled wall, the spacing must not exceed the piles' diameter.) Change the **Spacing** of the piles to 600 mm and click **OK** to proceed. The remaining sectional properties update as you do so.



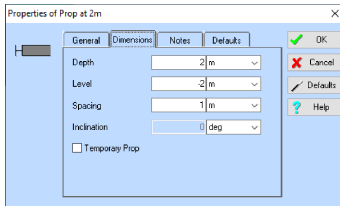
- ReWaRD will create a new retaining wall named '20 m long wall' and add it to the Stockyard. To add the wall to the construction stage, drag it from the Stockyard and drop it onto the Workbook's Drawing Board.
- Now repeat the above steps for the prop. Click on the **Stockyard** to make sure it is selected. Open the program's **Insert** menu and click on **Prop...** to display the Create Prop box. Alternatively, click on the **Create Prop** button on the Stockyard's Toolbar.



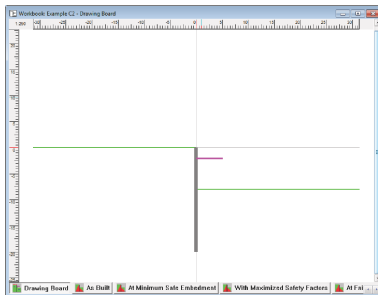
- The Create Prop box will open. Select 'Horizontal Prop' and click **OK** to proceed.



10. The 'Properties of Prop 1' box will open and display its **General** page. Change the **Name** of the prop to 'Prop at 2 m'.
11. Click on the **Dimensions** tab to change page. Change the **Depth** of the prop to 2 m and click **OK** to proceed.



12. ReWaRD will create a new prop named 'Prop at 2 m' and add it to the Stockyard. To add the prop to the construction stage, drag it from the Stockyard and drop it onto the Workbook's Drawing Board.
13. Right-click on the Drawing Board's ruler to change its scale to **1:250** (if not already set to this value). The Drawing Board should now look like this:

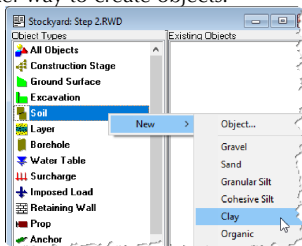


A copy of this step can be found at [Projects]\Tutorial 2\Step 3.rwd.

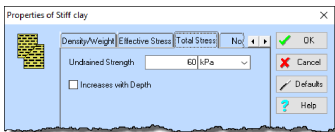
## Step 4 – create the borehole

In Step 4, you will specify ground conditions at the site – using a soil to represent the properties of the clay, a layer to represent the geometry and drainage conditions of that soil, and a borehole to represent the elevation and ordering of the layers. This step will also demonstrate a quicker way to create objects.

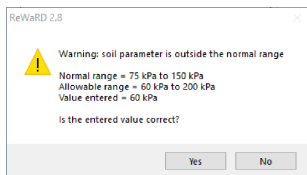
1. Right-click on the word 'Soil' in the **Stockyard's Types Pane** to display its context-sensitive menu. Click **New** to expand the sub-menu and then click **Clay** to create the new soil. Alternatively, click on the **Create Soil** button on the Stockyard's Toolbar.



2. The 'Properties of Soil 1' box will open and display its **General** page. Change the **Name** of the soil to 'Stiff clay'.
3. Click on the **Classification** tab to change page. Change the soil's **State** to 'Stiff'.
4. Click on the **Density/Weight** tab to change page. If necessary, change the soil's **Saturated Weight** and **Unsaturated Weight** densities to  $20 \text{ kN/m}^3$ .
5. Click on the **Effective Stress** tab to change page. Change the soil's **Angle of Friction** (i.e. shearing resistance) to  $25^\circ$ , but leave the other properties unchanged.
6. Click on the **Total Stress** tab to change page. Change the soil's undrained strength to 60 kPa.

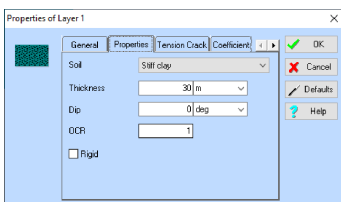
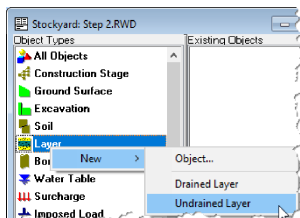


7. Click on the **Notes** tab to change page. When you do so, a warning message will appear telling you that the 'soil parameter is outside the normal range'. This occurs because

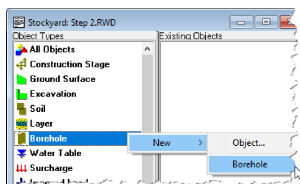


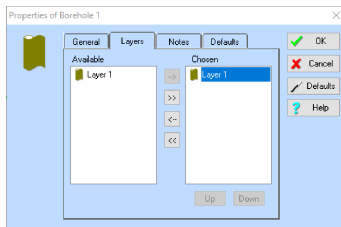
for a clay specified as stiff, ReWaRD expects its strength to be between 75 and 150 kPa. The entered value of 60 kPa will be accepted, but only after confirmation via this warning box. Click **Yes** to confirm the value and proceed.

8. Click on the **Notes** tab again and then add any information you want to attach to this soil via the text control there. Finally, click **OK** to confirm the entered values and to proceed. ReWaRD will create a new soil named 'Stiff clay' and add it to the Stockyard.
9. Next, right-click on the word 'Layer' in the **Stockyard's Types Pane** to display its context-sensitive menu. Click **New** to expand the sub-menu and then click **Undrained Layer** to create a new layer.
10. The 'Properties of Layer 1' box will open and display its **General** page.
11. Click on the **Properties** tab to change page. Change the **Soil** to 'Stiff clay' and change the layer's **Thickness** to 30 m. Click **OK** to confirm these settings and to proceed. ReWaRD will create a new layer named 'Layer 1' and add it to the Stockyard.

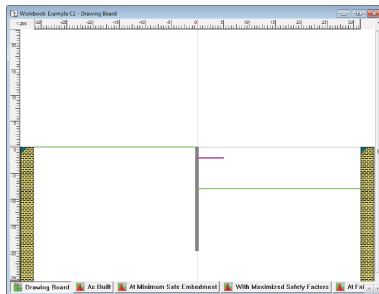


12. Finally, right-click on the word 'Borehole' in the **Stockyard's Types Pane** to display its context-sensitive menu. Click **New** to expand the sub-menu and then click **Borehole** to create a new borehole.
13. The 'Properties of Borehole 1' box will open and display its **General** page.
14. Click on the **Layers** tab to change page. Select 'Layer 1' in the **Available** box and click the --> button to move it into the **Chosen** box. Click **OK** to confirm these settings and to proceed.





15. ReWaRD will create a new borehole named 'Borehole 1' and add it to the Stockyard. To add the borehole to the construction stage, drag it from the Stockyard and drop it onto the Workbook's Drawing Board. The Drawing Board should now look like this:



A copy of this step can be found at [Projects]\Tutorial 2\Step 4.rwd.

## Step 5 – create water tables

In Step 5, you will create two water tables, one on each side of the wall.

1. Right-click on the words 'Water Table' in the **Stockyard's Types Pane** to display its context-sensitive menu. Click **New** to expand the sub-menu and then click **Linear Seepage Water table** to create the new water table.
2. The 'Properties of Water Table 1' box will open and display its **General** page. Change the **Name** of the water

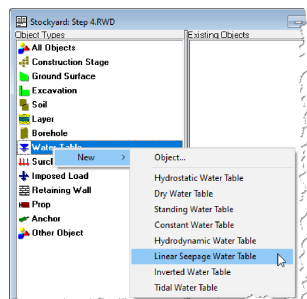
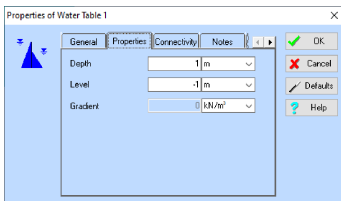
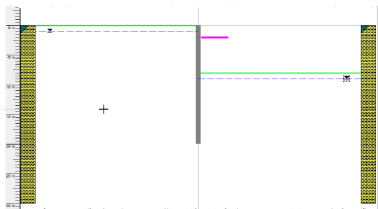


table to 'Retained water'.

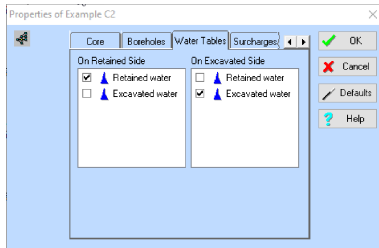
3. Click on the **Properties** tab to change page. Change the water table's **Depth** to 1 m. Click **OK** to confirm the entered values and to proceed.



4. ReWaRD will create a new water table named 'Retained water' and add it to the Stockyard.
5. Repeat the previous steps to create a second Linear Seepage Water Table named 'Excavated water' at a depth of 9 m.
6. Add the two water tables to the construction stage, by dragging them from the Stockyard and dropping them onto the Workbook's Drawing Board. The 'Retained water' object should be dropped to the left of the wall and the 'Excavated water' object to the right. The Drawing Board should now look like this:



7. If you make a mistake dropping the water tables, so that they do not appear as shown above, then you can rectify this by dragging them back into the Stockyard.
8. Alternatively, double-click on any white area on the Drawing Board to display the Construction Stage's properties box. Click on the **Water Tables** tab to change page. Then change the tick marks in the **On Retained Side** and **On Excavated Side** boxes to match the screenshot below. Click **OK** to confirm and to proceed.

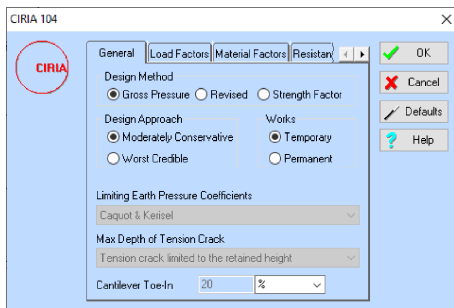
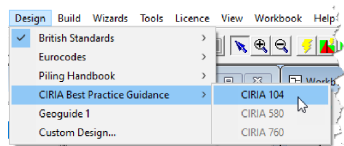


A copy of this step can be found at [Projects]\Tutorial 2\Step 5.rwd.

### Step 6 – choose the design standard

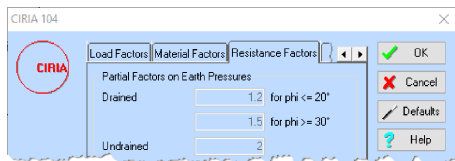
In Step 6, you will select the design standard to use to when calculating the wall’s stability.

1. If it is not already ticked, select **CIRIA Best Practice Guidance > CIRIA 104** from ReWaRD’s **Design** menu.
2. Next, edit the settings for this standards by selecting **Design Standard...** from the **Properties** menu.
3. On the **General** page, set the **Design Method** to ‘Gross Pressure Method’, the **Design Approach** to ‘Moderately Conservative’, and the the **Works** to ‘Temporary’.



4. Click on the **Resistance Factors** tab to change page. Confirm that the factors applied to drained parameters are 1.2 for  $\phi \leq 20^\circ$ , 1.5 for  $\phi \geq$

30°, and 2.0 for undrained parameters (as per CIRIA 104).



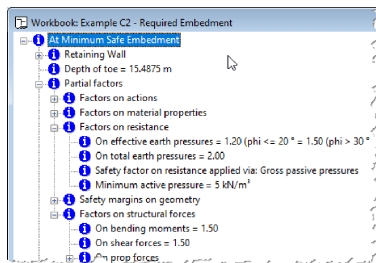
5. Review other settings by clicking on the various tabs in turn. When you have finished, click **OK** to close the property box.

A copy of this step can be found at [Projects]\Tutorial 2\Step 6.rwd.

## Step 7 – calculate the required embedment

In Step 7, you will determine the required embedment for this design situation, according to CIRIA 104's Gross Pressure Method.

1. If it is not already selected, click on the Workbook to make it active. (The commands on the **Build** menu are only enabled when a Workbook is selected.)
2. Open the **Build** menu and choose the **Required Embedment** command. (ReWaRD automatically switches the Workbook to its Summary View.)
3. Expand the **Partial Factors** node to display more of the tree-structure, by clicking on the + button next to its caption. Then expand the **Factors on resistance** and **Factors on structural forces** nodes to display the partial factors that have been applied in this calculation.
4. The required embedment of the wall is displayed under the **At Minimum Safe Embedment**, next to the **Depth of toe** node. CIRIA 104 reports the depth of embedment as 7.5 m, which – when added to the retained height of 8 m – gives a toe depth of 15.5 m.



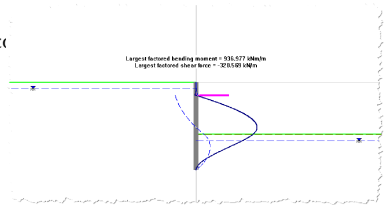
A copy of this step can be found at [Projects]\Tutorial 2\Step 7.rwd.

## Step 8 – calculate structural forces



In Step 8, you will determine the resulting structural forces in the wall according to CIRIA 104.

1. If it is not already selected, click on the Workbook to make it active. (The commands on the **Build** menu are only enabled when a Workbook is selected.)
2. Open the **Build** menu and choose the **Structural Forces** command. ReWaRD will automatically switch the Workbook to its Picture View.



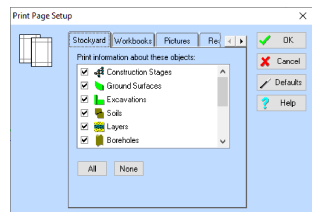
3. ReWaRD then calculates the resultant structural forces in the wall and displays the results pictorially, as shown on the right. The largest *factored* bending moment and shear force in the wall are also given. CIRIA 104 (on page 137) reports the maximum unfactored bending moment as 627 kNm/m (corresponding to a factored bending moment of  $627 \times 1.5 = 940.7$  kNm/m); and the maximum unfactored shear forces as 232 kN/m (corresponding to a factored shear force of  $232 \times 1.5 = 324$  kN/m).

A copy of this step can be found at [Projects]\Tutorial 2\Step 8.rwd.

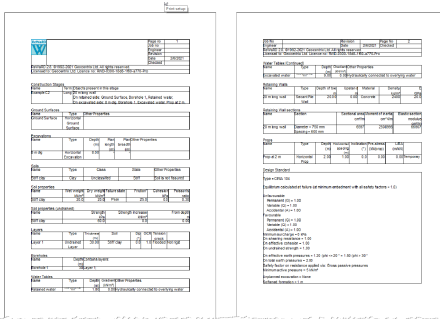
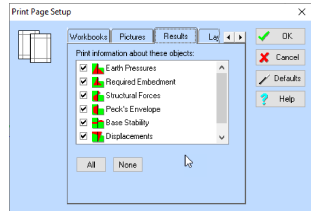
## Step 9 – print the results

In Step 9, you will obtain a hard copy of your results.

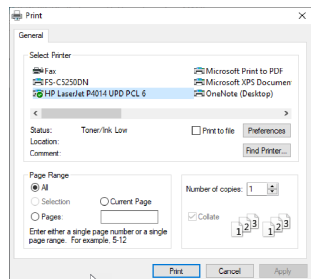
1. Click on ReWaRD's **File** menu and choose **Print > Page Setup...** to display the program's **Print Page Setup** box.
2. On **Stockyard** page, tick those objects about which you want information to be printed.
3. Click on the **Workbooks** tab to change page and again tick those objects about which you want information to be printed. Note that this page automatically selects construction stages for which calculations have already been performed.
4. Click on the **Pictures** tab to change page and tick those components of the results that you want to be printed.



- Finally, click on the **Results** tab to change page and tick those results you want to be printed.
- Click **OK** to confirm your selections and proceed.
- Next, click on ReWaRD's **File** menu and choose **Print > Print Preview** to display a screen preview of the printed output.



- Use the controls on the toolbar at the top of the preview window to control the appearance of the print preview. Click the **X** button to close the preview window.
- Finally, click on ReWaRD's **File** menu and choose **Print > Print...**. The program's **Print Page Setup** box will be displayed once again (in case you wish to change any of your selections). Click **OK** to confirm and – this time – the program's **Print** box will appear, giving you a choice of printers attached to your system to choose from.
- Select your printer and click **Print** to produce the hard copy.



A copy of this step can be found at [Projects]\Tutorial 2\Step 9.rwd.

## Step 10 – close the project

In Step 10, you will close and (optionally) save<sup>2</sup> the project.

1. Open the program's **File** menu and click **Exit**.
2. If you have made changes to the project since it was last saved, ReWaRD will ask you if you want to save it before proceeding. Answer **Yes** or **No** by clicking the appropriate button.
3. If you have not already named this file, ReWaRD will display its **Save As** box. Enter the name you want in the **File name** box and click the **Save** button. ReWaRD will then save and close the project.

A copy of this project can be found at [Projects]\Tutorial 2\Tutorial 2.rwd.

## What next?

Tutorial 3 takes you through the design of a more complicated structure – a multi-propped cofferdam in mixed soils – using the techniques introduced in Tutorials 1 and 2.

---

<sup>2</sup>You cannot save the project in the Trial Edition of ReWaRD

## TUTORIAL 3

### COFFERDAM IN MIXED SOILS

Tutorial 3 helps you to get to grips with ReWaRD's more advanced features, by building a multi-propped cofferdam in a mixed soil profile. The tutorial shows you how to change engineering objects generated by ReWaRD's Construction Wizard; add new engineering objects as needed; choose between the available design standards; check the results of your calculations; and customize the printed output.

The worked example is taken from CIRIA's Special Publication 95, *The design and construction of sheet-piled cofferdams*, by Williams and Waite (1993). Appendix B of that document describes the design of a sheet pile cofferdam used to support a sub-surface tank in a mixed soil profile.

- Ground conditions at the site comprise: 4 m of sand and gravel ( $\gamma_{\text{dry}} = 18 \text{ kN/m}^3$ ;  $\gamma_{\text{sat}} = 20.3 \text{ kN/m}^3$ ;  $\phi = 35^\circ$ ); 2.5 m of firm clay ( $\gamma_{\text{sat}} = 21 \text{ kN/m}^3$ ;  $c_u = 60 \text{ kPa}$ ); 3 m of silty sand ( $\gamma_{\text{sat}} = 20.3 \text{ kN/m}^3$ ;  $\phi = 30^\circ$ ); 2 m of soft/firm clay ( $\gamma_{\text{sat}} = 20 \text{ kN/m}^3$ ;  $c_u = 40 \text{ kPa}$ ); and medium coarse sand ( $\gamma_{\text{sat}} = 20.3 \text{ kN/m}^3$ ;  $\phi = 35^\circ$ ).
- The cofferdam will be open for less than 3 months and open to full excavation depth for no more than two weeks (hence a total stress analysis is appropriate).
- Ground water level is 2.5 m below ground surface. Water pressures in the medium coarse sand are sub-artesian, with a pressure head of 80 kPa at the surface of the sand. A pumping system will be installed to lower the water pressures in the medium coarse sand by 80 kPa throughout the depth of interest.
- The permanent works are to be constructed on top of a base slab at a depth of 8 m. A 0.5 m thick drainage layer is to be placed beneath the base slab, so that the final formation is at a depth of 8.5 m. The sheet piles will have an upstand of 1 m.
- The first frame will be installed at 0.5 m above ground level and the excavation taken down to 5 m before installing the second frame. The second frame will be installed at a depth of 4 m and the excavation taken down to 7.5 m before installing the third frame. The third frame will be installed at a depth of 6.5 m.
- The plan dimensions of the cofferdam are 17 m by 12 m.

## Overview

- In Step 1, you will use the Construction Wizard to create a sequence of construction stages.
- In Step 2, you will change the depths of the excavations generated by the Construction Wizard to match the project's specification.
- In Step 3, you will add soils that are missing from the project.
- In Step 4, you will add layers that are missing from the project and include them in the borehole.
- In Step 5, you will add an upstand to the wall and relocate the top prop to the head of the wall.
- In Step 6, you will change the depth of some of the existing water tables and add new water tables.
- In Step 7, you will add a surcharge on the retained side of the wall.
- In Step 8, you will select the design standard to be followed by the calculations.
- In Step 9, you will calculate earth pressures, required embedment, structural forces, and displacements for 'Stage 2 (Generated)'.
- In Step 10, you will close (and optionally save) the project.

If ReWaRD is not already running, double-click on the ReWaRD icon on Windows' Desktop to start the program. Once the splash screen has disappeared, ReWaRD displays its Start-up Wizard. Select **Run the Construction Wizard** from the available options and click **Go** to proceed.

If ReWaRD is already running and you have an existing project open, click **Close** on the program's **File menu**. (You will be prompted to save your work if you have not already done so.) Then, open the Construction Wizard by selecting the **Wizards > Construction Wizard** command on ReWaRD's main menu.

## Step 1 – create the project

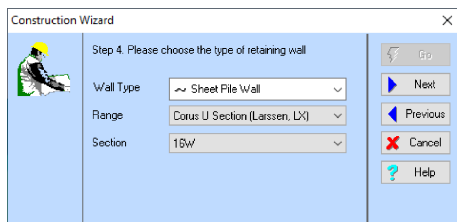
In Step 1, you will use the Construction Wizard to create a sequence of construction stages to model the multi-staged construction outlined in the project's specification.

1. The first page of the Wizard ('Step 1') asks you to specify the finished geometry of the retaining structure. Select the **Multi-propped** button, set the **Number of Props** to 3, and set the **Retained Height** to 8.5 m. Click **Next** to continue.

- Step 2 of the Wizard asks you to enter the depths of the props. You want to place the first prop at 0.5 m above ground level, but the Construction Wizard will not allow you to enter negative depths. Therefore, leave Prop 1 at ground level temporarily (you will change its depth later). Select Prop 2, enter 4 m in the **Depth** box, and click the **Apply** button. Then select Prop 3, enter 6.5 m in the **Depth** box, and click **Apply**. Click **Next** to continue.

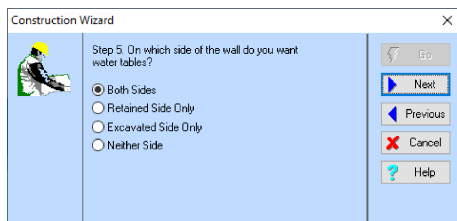
- Step 3 of the Wizard asks you to enter the properties of the predominant soil type. (In this example, we will treat the sand and gravel as the predominant soil type.) Select 'Sand' from the **Soil Type** box; enter a **Wet Mass Density** of 2069 kg/m<sup>3</sup> (equivalent to a weight density of 20.3 kN/m<sup>3</sup>); enter a **Dry Mass Density** of 1766 kg/m<sup>3</sup> (equivalent to 18 kN/m<sup>3</sup>); and finally enter an angle of friction of 35°. Click **Next** to continue.

- Step 4 of the Wizard asks you to choose the type of retaining wall to create. Select 'Sheet Pile Wall' in the **Wall Type** box, then 'Corus U Section (Larsen, LX)' in the **Range** box, and finally '16W' in the **Section**. Click **Next** to continue.



The screenshot shows the 'Construction Wizard' dialog box at Step 4. The title bar reads 'Construction Wizard' with a close button (X). On the left is a small icon of a construction worker. The main area contains the text 'Step 4 Please choose the type of retaining wall'. Below this are three dropdown menus: 'Wall Type' set to 'Sheet Pile Wall', 'Range' set to 'Corus U Section (Larsen, LX)', and 'Section' set to '16W'. On the right side, there are five buttons: 'Go' (with a left arrow), 'Next' (with a right arrow), 'Previous' (with a left arrow), 'Cancel' (with a red X), and 'Help' (with a question mark).

- Step 5 of the Wizard asks you where you want to place any water tables. Select **Both Sides** and click **Next** to continue.



The screenshot shows the 'Construction Wizard' dialog box at Step 5. The title bar reads 'Construction Wizard' with a close button (X). On the left is a small icon of a construction worker. The main area contains the text 'Step 5 On which side of the wall do you want water tables?'. Below this are four radio button options: 'Both Sides' (which is selected), 'Retained Side Only', 'Excavated Side Only', and 'Neither Side'. On the right side, there are five buttons: 'Go' (with a left arrow), 'Next' (with a right arrow and a blue border), 'Previous' (with a left arrow), 'Cancel' (with a red X), and 'Help' (with a question mark).

- Step 6 of the Wizard asks you to generate the project. If you want to change any settings made in the previous steps, click the **Previous** button to go back. Otherwise, click **Go** to generate the project.

The Construction Wizard then:

- Creates Stages 1, 2, 3, and 4
- Creates Ground 1 and Excavations 1 to 4
- Creates Soil 1, Layer 1, and Borehole 1
- Creates Water Tables 1 to 5
- Creates Wall 1 and Props 1, 2, and 3
- Attaches Soil 1 to Layer 1 and adds Layer 1 to Borehole 1
- Adds Ground 1, Wall 1, Borehole 1 (on both sides of the wall), and Water Table 1 to all stages

- Adds Excavation 1 and Water Table 2 to Stage 1
- Adds Excavation 2, Water Table 3, and Prop 1 to Stage 2
- Adds Excavation 3, Water Table 4, and Prop 2 to Stage 3
- Adds Excavation 4, Water Table 5, and Prop 3 to Stage 4
- Opens the Workbooks for Stages 1 to 4

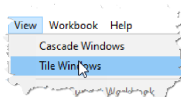
Now is a good moment to save your work to disk, which you can do using the **Save** or **Save As** commands on ReWaRD's **File** menu.

A copy of this step can be found at [Projects]\Tutorial 3\Step 1.rwd.

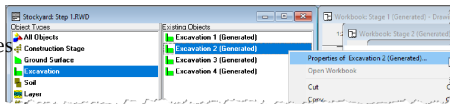
## Step 2 – change the excavation depths

In Step 2, you will change the depths of the excavations generated by the Construction Wizard to match the project's specification.

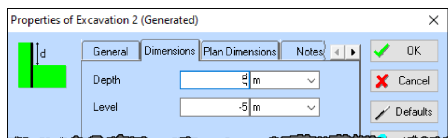
1. Open the program's **View** menu and click **Tile Windows** to change the arrangement of the open Workbooks. (In this arrangement, you will see the effect of each change in property as it is applied.)



2. Click on 'Excavation' in the Stockyard's Types Pane (top-left) and then right-click on 'Excavation 2 (Generated)' in its Objects Pane (top-right). Choose the command **Properties of Excavation 2 (Generated)...** to display that object's properties box.

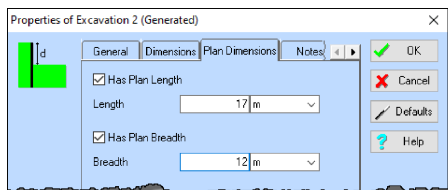


3. Click on the **Dimensions** tab to change page and enter 5 m in the excavation's **Depth** box.



4. Click on the **Plan Dimensions** tab to change page. Tick the **Has Plan Length** box and enter 17 m in the **Length** box. Tick the **Has Plan Breadth** box and enter 12 m in the **Breadth** box.





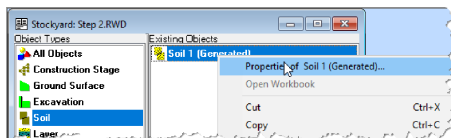
- Click **OK** to confirm the values entered and to proceed.
- Repeat the previous four steps for Excavations 3 and 4, but enter their depths of excavation as 7.5 m and 8.5 m respectively.

A copy of this step can be found at [Projects]\Tutorial 3\Step 2.rwd.

### Step 3 – add the missing soils

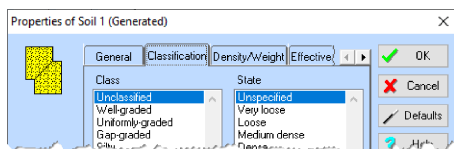
In Step 3, you will add soils that are missing from the project.

- Click on 'Soil' in the Stockyard's Types Pane and then right-click on 'Soil 1 (Generated)' in its Objects Pane.

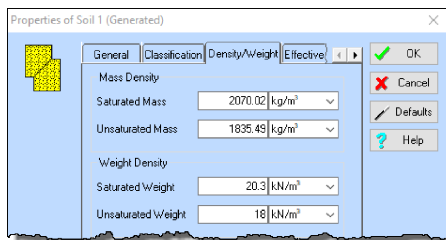


Choose the command **Properties of Soil 1 (Generated)...** to display that object's properties box.

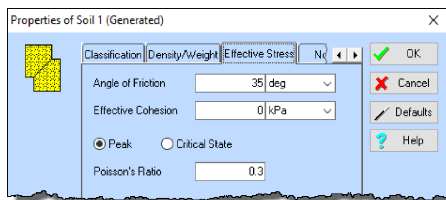
- On the **General** page, change the soil's **Name** to 'Sand and gravel'.
- Click on the **Classification** tab to change page, but leave the soil's **Class** as 'Unclassified' and **State** as 'Unspecified'.



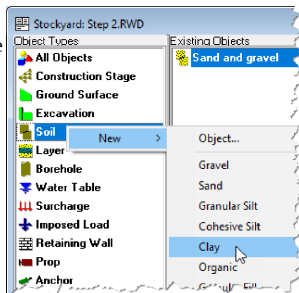
- Click on the **Density/Weight** tab to change page. Enter the soil's **Saturated Weight** density as  $20.3 \text{ kN/m}^3$  and its **Unsaturated Weight** density as  $18 \text{ kN/m}^3$ . If you get a warning message when you proceed on the next step, click **Yes** to confirm the values entered.



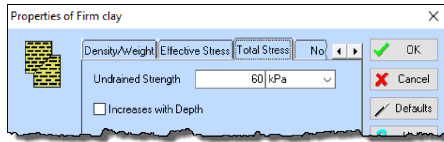
- Click on the **Effective Stress** tab to change page. If not already selected, select the **Peak** button. Enter the soil's **Angle of Friction** as 35° and its **Effective Cohesion** as 0 kPa.



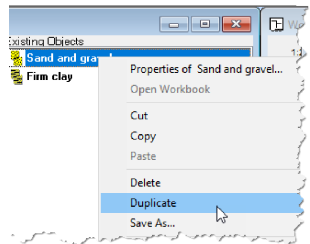
- Click on the **OK** button to confirm the values entered and to proceed.
- Now right-click on 'Soil' in the Stockyard's Types Pane and choose the command **New > Clay** to create a new clay and display that object's properties box.



- Repeat the steps above to set the properties of this new soil, as follows: **Name** = 'Firm clay'; **State** = 'Firm'; **Saturated** and **Unsaturated** weight densities both = 21 kN/m<sup>3</sup>; **Angle of Friction** and **Effective Cohesion** both take default values. If you get warning messages when you enter any values, click **Yes** to confirm them.
- Then click on the **Total Stress** tab to change page. Enter the soil's **Undrained Strength** as 60 kPa.



10. Click on the **OK** button to confirm the values entered and to proceed.
11. Repeat the steps above to create a new sand with the following properties: **Name** = 'Silty sand'; **Class** = 'Silty'; **Saturated** and **Unsaturated** weight densities both = 20.3 kN/m<sup>3</sup>; **Angle of Friction** = 30° and **Effective Cohesion** = 0 kPa. If you get warning messages when you enter any values, click **Yes** to confirm them.
12. Repeat the steps above to create a new clay with the following properties: **Name** = 'Soft/firm clay'; **State** = 'Soft'; **Saturated** and **Unsaturated** weight densities both = 20 kN/m<sup>3</sup>; **Angle of Friction** = 30° and **Effective Cohesion** = 0 kPa; **Undrained Strength** = 40 kPa. If you get warning messages when you enter any values, click **Yes** to confirm them.
13. Finally, right-click on 'Sand and gravel' in the Stockyard's Existing Objects Pane and choose the command **Duplicate** to create a carbon copy of that soil, called 'Sand and gravel - Copy'.
14. Then edit 'Sand and gravel - Copy' in order to change its name to 'Medium coarse sand'.

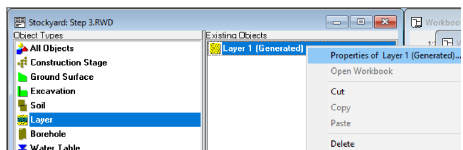


You will find a copy of the project in its current state at [Projects]\Tutorial 3\Step 3.rwd.

## Step 4 – add missing layers

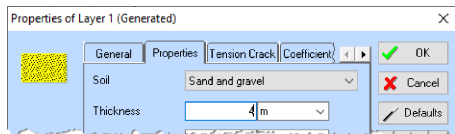
In Step 4, you will add layers that are missing from the project and include them in the borehole.

1. Click on 'Layer' in the Stockyard's Types Pane and then right-click on 'Layer 1 (Generated)' in its Objects Pane.

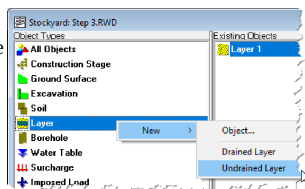


Choose the command **Properties of Layer 1 (Generated)...** to display that object's properties box.

2. On the **General** page, change the layer's **Name** to 'Layer 1'.
3. Click on the **Properties** tab to change page, change the **Soil** to 'Sand and gravel' and enter the **Thickness** as 4 m.



4. Click on the **OK** button to confirm the values entered and to proceed. The boreholes displayed on the Drawing Board of each stage will update to reflect this layer's new thickness.
5. Now right-click on 'Layer' in the Stockyard's Types Pane and choose the command **New > Undrained Layer** to create a new undrained layer and display that object's properties box.
6. Repeat the steps above to set the properties of this new layer, as follows: **Name** = 'Layer 2'; **Soil** = 'Firm clay'; **Thickness** = 2.5 m.
7. Repeat the steps above to create a **Drained Layer** with the properties: **Name** = 'Layer 3'; **Soil** = 'Silty sand'; **Thickness** = 3 m.
8. Repeat the steps above to create another **Undrained Layer** with the properties: **Name** = 'Layer 4'; **Soil** = 'Soft/firm clay'; **Thickness** = 2 m.
9. Repeat the steps above to create another **Drained Layer** with the properties: **Name** = 'Layer 5'; **Soil** = 'Medium coarse sand'; **Thickness** = 5 m.
10. Add Layers 2 to 5 to 'Borehole 1' by dragging-and-dropping each layer in turn onto one of the Drawing Boards that are displayed in ReWaRD's main window.

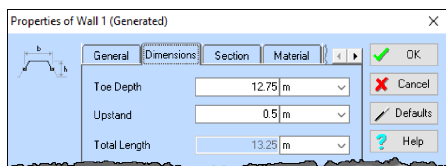
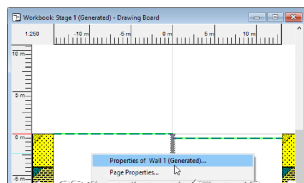


A copy of this step can be found at [Projects]\Tutorial 3\Step 4.rwd.

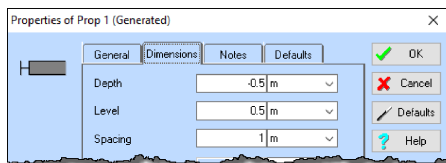
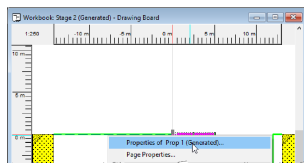
## Step 5 – extend the wall and move the top prop

In Step 5, you will add an upstand to the wall and relocate the top prop to the head of the wall.

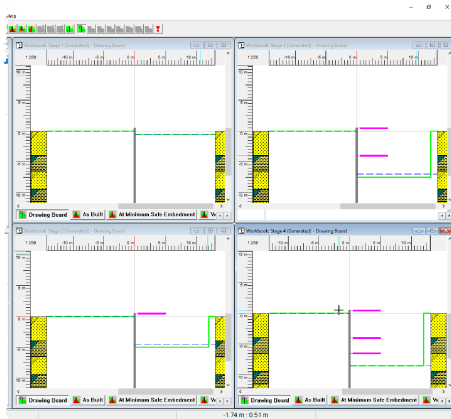
1. Select the retaining wall by clicking on its image on the Drawing Board for 'Stage 1 (Generated)'. A selection box will appear around the image and the wall will be highlighted in the Stockyard.
2. Right-click on the selected wall and choose **Properties of Wall 1 (Generated)** from the popup menu that appears on screen. The wall's properties box will appear. Click on the **Dimensions** tab to change page.
3. Change the wall's **Upstand** to 0.5 m. The **Total Length** box will update to show 13.25 m. Click **OK** to confirm the new values. The Drawing Boards will automatically refresh to show the new upstand.



4. Next, select the top prop by clicking on its image on the Drawing Board for 'Stage 2 (Generated)'. A selection box will appear around the image and the prop will be highlighted in the Stockyard.
5. Right-click on the selected prop and choose **Properties of Prop 1 (Generated)** from the popup menu that appears. The prop's properties box will appear. Click on the **Dimensions** tab to change page.
6. Change the **Level** to 0.5 m and click **OK** to confirm. The Drawing Board will automatically refresh to show the new prop level.



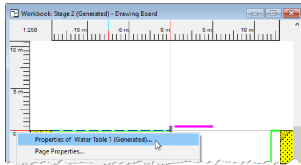
7. ReWaRD's main screen should now look something like this:

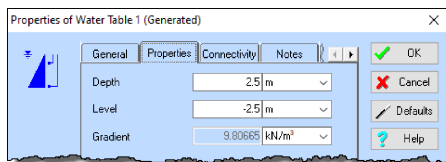


A copy of this step can be found at [Projects]\Tutorial 3\Step 5.rwd.

## Step 6 – move existing water tables and create new ones

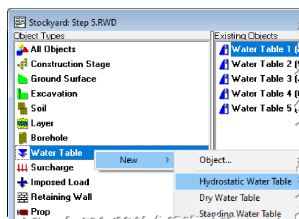
In Step 6, you will change the depth of some of the existing water tables and add new water tables.

1. Select 'Water Table 1' – the water table on the retained side of the wall – by clicking on its image on the Drawing Board for 'Stage 2 (Generated)'. A selection box will appear around the image and the water table will be highlighted in the Stockyard.
2. Right-click on the selected water table and choose **Properties of Water Table 1 (Generated)** from the popup menu that appears. The water table's properties box will appear. Click on the **Properties** tab to change page.
 
3. Change the **Depth** to 2.5 m and click **OK** to confirm the new value. The Drawing Boards will automatically refresh to show the new water table depth.

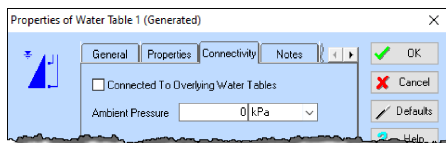


- Repeat the previous steps for 'Water Table 3', changing its depth to 5.0 m. This will bring this water table back into line with the formation level for 'Stage 2 (Generated)'.

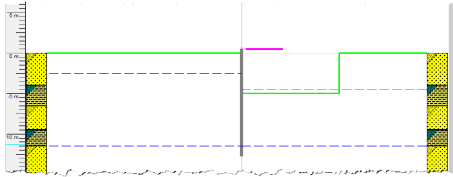
- Now right-click on 'Water Table' in the Stockyard's Types Pane and choose the command **New > Hydrostatic Water Table** to create a new hydrostatic water table and display that object's properties box.



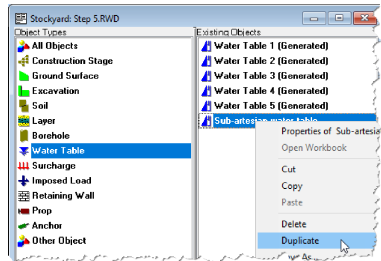
- On the **General** page, change the water table's **Name** to 'Sub-artesian water table'.
- Click on the **Properties** tab to change page and change the **Depth** to 11.5 m.
- Click on the **Connectivity** tab to change page. Untick the **Connected to Overlying Water Tables** box and then enter 80 kPa in the **Ambient Pressure** box. Click **OK** to confirm the values entered and proceed.



- Add 'Sub-artesian water table' to 'Stage 2 (Generated)' by dragging-and-dropping the water table from the Stockyard onto the Drawing Board for that stage. The water table will appear on whichever side of the retaining wall you release the mouse. Repeat this drag-and-drop operation, releasing the water table on the other side of the wall on the second occasion. Stage 2 should now look something like this (you may need to enlarge the Workbook's window to see the complete picture):



10. Finally, right-click on 'Sub-artesian water table' in the Stockyard's Objects Pane and choose the command **Duplicate** to create a carbon copy of that water table with the suffix '- Copy'.
11. Double-click on this copy to open its properties box.
12. On the **General** page, change the water table's **Name** to 'Pumped water table'.
13. Click on the **Connectivity** tab to change page. Enter 0 kPa in the **Ambient Pressure** box and click **OK** to confirm the values entered.
14. Add 'Pumped water table' to 'Stage 3 (Generated)' and 'Stage 4 (Generated)' by dragging-and-dropping the water table from the Stockyard onto the Drawing Boards for those stages. Do this twice, releasing the water table on both sides of the wall.



Finally, you need to change the depth of Water Table 4:

1. Right-click on the **Workbook - Stage 3 (Generated) Drawing Board** command on ReWaRD's **View** menu, to bring the Workbook for Stage 3 to the front of your screen.
2. Right-click on 'Water Table 4' – the water table that is floating above the excavation at present – and choose **Properties of Water Table 4 (Generated)...** from the popup menu that appears. The water table's properties box will appear. Click on the **Properties** tab to change page.
3. Change the **Depth** to 7.5 m and click **OK** to confirm the new value. The water will now align with the excavation.

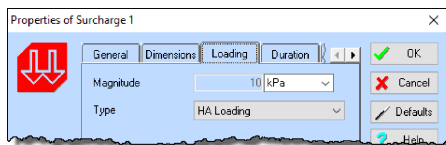
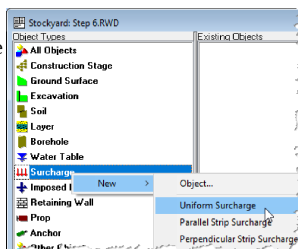
A copy of this step can be found at [Projects]\Tutorial 3\Step 6.rwd.



## Step 7 – add a surcharge

In Step 7, you will add a surcharge on the retained side of the wall.

1. Right-click on 'Surcharge' in the Stockyard's Types Pane and choose the command **New > Uniform Surcharge** to create a new surcharge and display that object's properties box.
2. Click on the **Loading** tab to change page and (if necessary) change the **Type** to 'HA Loading' (which results in the **Magnitude** being set to 10 kPa). Click on the **OK** button to confirm the values entered and to proceed.



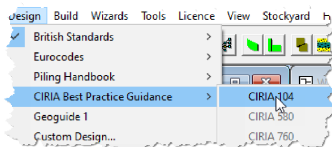
3. Add 'Surcharge 1' to all the construction stages by dragging-and-dropping the surcharge from the Stockyard onto the Drawing Boards for those stages. Be careful to drop the surcharge to the left of the retaining wall, to make sure it appears on the retained side only.

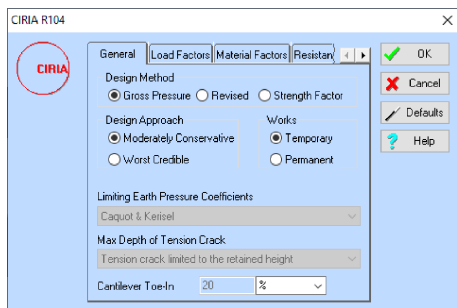
A copy of this step can be found at [Projects]\Tutorial 3\Step 7.rwd.

## Step 8 – select the design standard

In Step 8, you will select the design standard to be followed by the calculations.

1. If it is not already ticked, select **CIRIA Best Practice Guidance > CIRIA 104** from ReWaRD's **Design** menu.
2. Next, edit the settings for this standards by selecting **Design Standard...** from the **Properties** menu.
3. On the **General** page, set the **Design Method** to 'Gross Pressure Method', the **Design Approach** to 'Moderately Conservative', and the **Works** to 'Temporary'.





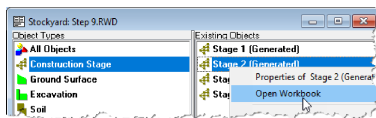
- Review the other settings by clicking on the various tabs in turn. When you have finished, click **OK** to close the property box.

A copy of this step can be found at [Projects]\Tutorial 3\Step 8.rwd.

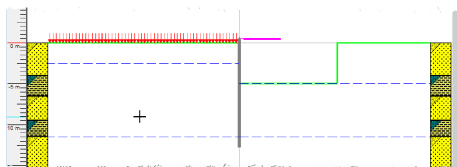
## Step 9 – calculate earth pressures, structural forces, etc.

In Step 9, you will calculate earth pressures, required embedment, structural forces, and displacements for 'Stage 2 (Generated)'.

- Open the **View** menu and choose the **Close All > Workbooks** command to tidy up ReWaRD's desktop.
- Click on 'Construction Stage' in the Stockyard's Types Pane and then right-click on 'Stage 2 (Generated)' in its Objects Pane. Select **Open Workbook** from the popup

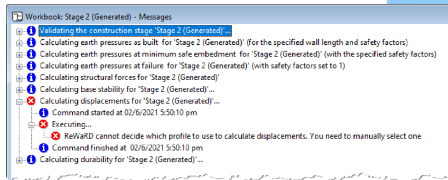
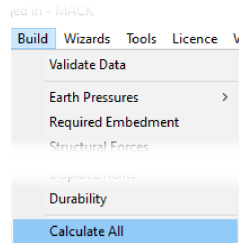


menu that appears to display that stage's Workbook. The Drawing Board for 'Stage 2 (Generated)' should look something like this:

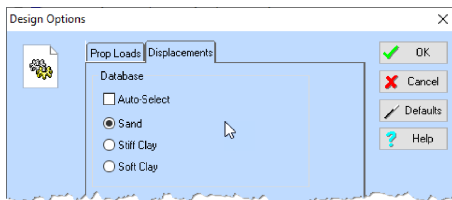


- If it is not already selected, click on the Workbook to make it active. (The commands on the **Build** menu are only enabled when a Workbook is selected.)

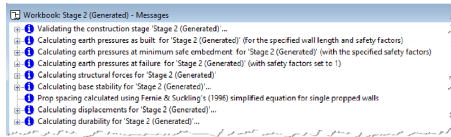
4. Open the **Build** menu and choose the **Calculate All** command.
5. An error message will appear as follows: '1 error/warning message(s) generated during the calculations: please inspect the Messages View for more information'. Click **OK** to confirm you have read this message. ReWaRD will automatically display its Messages View, which will look something like this:



6. This error message occurs because the ground surface at this site comprise interbedded sands and clays and ReWaRD cannot decide whether to treat this profile as predominantly sand or clay.
7. Open the **Properties** menu and choose the **Design Options...** command. A dialog box will appear. Click on the **Displacements** tab to change page and untick the **Auto-Select** box. If necessary, select **Sand** to tell the program to treat this profile as sand (despite the presence of clay in it). Click **OK** to confirm these changes.



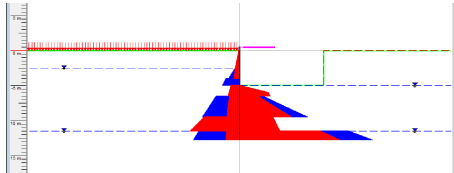
8. Open the **Build** menu and choose **Clear Messages** to remove the old messages from this view. The re-open the **Build** menu and choose **Calculate All** again. This time, no error message appears and the Message View looks something like this:



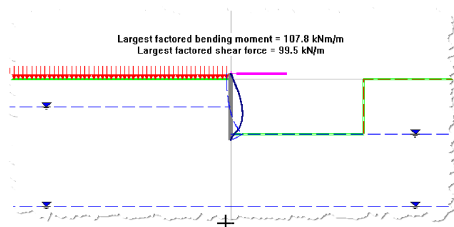
9. Now use the Workbook's toolbar to display the main results of the calculations one at a time on your screen.



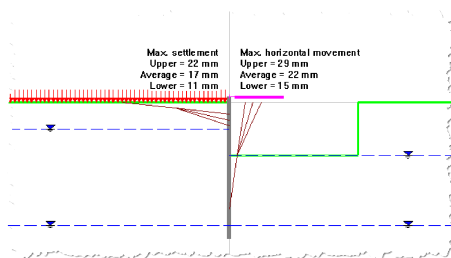
10. Click on the **View earth pressures as built** button – second button circled above – to display earth pressures as built. You will also need to click on the **View Picture** button – first button circled above – to switch to picture view.



11. Click on the **View structural forces** button – third button circled above – to display structural forces.



12. Finally, click on the **View displacements** button – fourth button circled above – to display displacements.



A copy of this step can be found at [Projects]\Tutorial 3\Step 9.rwd.

## Step 10 – close the project

In Step 10, you will close and (optionally) save<sup>3</sup> the project.

1. Open the program's **File** menu and click **Exit**.
2. If you have made changes to the project since it was last saved, ReWaRD will ask you if you want to save it before proceeding. Answer **Yes** or **No** by clicking the appropriate button.
3. If you have not already named this file, ReWaRD will display its **Save As** box. Enter the name you want in the **File name** box and click the **Save** button. ReWaRD will then save and close the project.

A copy of this project can be found at [Projects]\Tutorial 3\Tutorial 3.rwd.

## What next?

Further information about the program's capabilities can be found in the *ReWaRD User Manual* and the program's built-in help system. Details of the theory that underpins the program's calculations can be found in the *ReWaRD Reference Manual*.

Further resources are available from the Geocentrix website:

[www.geocentrix.co.uk](http://www.geocentrix.co.uk)

and by telephone (for customers with Software Re-Assurance).

---

<sup>3</sup>You cannot save the project in the Trial Edition of ReWaRD